

PICTURES

ROTOR ESD S1PS SR FO HRO
 BTB0019B0K12


DESCRIPTION

Running style safety footwear compliant with the new EN ISO 20345:2022. Seamless upper in ultra-breathable 3D fabric, anti-abrasion TPU reinforcements and 3D HF details. EVA midsole and "FO+HRO" rubber tread. Lightweight and sporty, to enhance the dynamicity of those who wear them.

FEATURES

UPPER:

seamless breathable micro-perforated 3D fabric, anti-abrasion TPU reinforcements and 3D HF details.

LINING:

breathable micro-perforated 3D fabric.

REMOVABLE INSOLE:

antistatic PU low density with ergonomic thermoforming.

ANTI-PERFORATION INSOLE:

made from zero-perforation ultralight textile fiber (PS - nail Ø 3.0 mm).

TOE CAP:

non magnetic fiberglass, insulating, resistant to 200J.

ANTI-SLIP ANTI-STATIC SOLE:

super-comfortable EVA midsole, high energy absorption and FO+HRO nitrile rubber tread.

PLUS:

Rotor closure system.
Anti-slipping microfiber insert in the heel area.
Metal free.

DETAILS

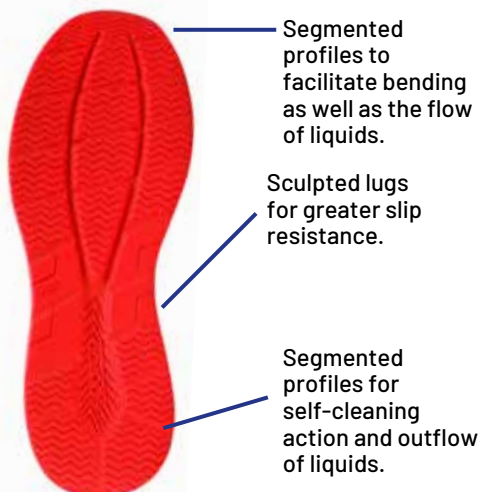


LOGOS and DECORATIONS microinjected.
3D High Frequency details on TPU reinforcements.



SEAMLESS construction.

OUTSOLE



A - Slip resistance on ceramic tile floor with NaLS (forward heel 7°)	0,33 (≥ 0,31)
B - Slip resistance on ceramic tile floor with NaLS (backward forepart 7°)	0,36 (≥ 0,36)
C - Slip resistance on ceramic tile floor with glycerine (forward heel 7°)	0,27 (≥ 0,19)
D - Slip resistance on ceramic tile floor with glycerine (backward forepart 7°)	0,24 (≥ 0,22)

ANTI-SLIP ANTI-STATIC SOLE made of super comfortable EVA midsole, high energy absorption and **SR + FO + HRO** nitrile rubber tread.

REMOVABLE INSOLE



REMOVABLE INSOLE
antistatic PU low density with ergonomic thermoforming.

