



S-CAPE_ROOPE_cod.BTBO038BOK01TG

EN ISO 20347:2022+A1:2024

MADE IN: CHINA

SIZE: 36/48 (5-13)

PICTURES

DESCRIPTION

CERTIFICATION 01

New line of super-lightweight occupational compliant with CE EN ISO 20347:2022+A1:2024 footwear, with breathable jacquard upper. Super-cushioning ETPU sole and rubber tread. For work or leisure, they offer absolute comfort with a style that wins you over.



FEATURES

- UPPER:** super-lightweight, seamless jacquard fabric.
- ANTI-SLIP ANTI-STATIC SOLE:** super comfortable ETPU midsole, FO+HRO nitrile rubber tread with high energy absorption.
- REMOVABLE INSOLE:** Antistatic PU low density with ergonomic thermoforming.
- LINING:** Breathable micro-perforated 3D fabric.
- ANTI-PERFORATION INSOLE:** NO
- TOE CAP:** NO

OUTSOLE

INSOLE



ANTI-SLIP ANTI-STATIC SOLE super comfortable ETPU midsole, FO+HRO nitrile rubber tread with high energy absorption.

REMOVABLE INSOLE Antistatic PU low density with ergonomic thermoforming.

USER MANUAL

MANUFACTURER'S INSTRUCTIONS AND INFORMATION

LANGUAGES INDEX

LANGUAGE	CODE	PAGE
ENGLISH	EN	2
FRANCAIS	FR	4
ESPAÑOL	ES	10
DEUTSCH	DE	14
FRANÇAIS	FR	18

MANUFACTURER'S INSTRUCTIONS AND INFORMATION

SPARCOTEAMWORK.COM

EN MANUFACTURER'S INSTRUCTIONS AND INFORMATION

EN ISO 20347:2022+A1:2024

Additional Protection

Additional Protection	Provision	Symbol
Electrostatic resistance (non-antistatic PU)	PE	PE
Electrostatic resistance (non-antistatic PU)	PE	PE
Electrostatic resistance (non-antistatic PU)	PE	PE

Additional Protection

Additional Protection	Provision	Symbol
Electrostatic resistance (non-antistatic PU)	PE	PE
Electrostatic resistance (non-antistatic PU)	PE	PE
Electrostatic resistance (non-antistatic PU)	PE	PE

EN MANUFACTURER'S INSTRUCTIONS AND INFORMATION

PRODUCT WARNING

USE AND MAINTENANCE INSTRUCTIONS

REMOVABLE INSOLE

REPLACE THE INSOLE

REPLACE THE INSOLE

USER MANUAL MULTILINGUE (IT, EN, ES, DE, FR) size 120 x 165 mm

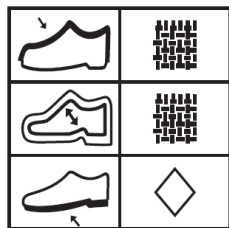
S-CAPE_ROOPE_cod.BTB0038B0K01TG

EN ISO 20347:2022+A1:2024

MADE IN: CHINA

SIZE: 36/48 (5-13)

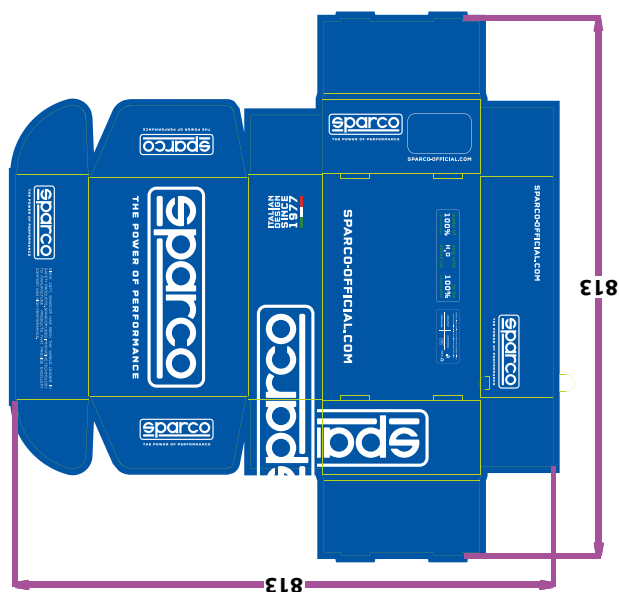
LABELS



COMPOSITION LABEL
onto the lining (inside the
right shoe) or onto the outsole

INTERNAL TONGUE LABEL
onto the lining inside
Size 50 x 15 mm

PACKAGING



SPARCO BOX
in cardboard blue-white
and protective inner tissue paper
Size 34.5*20*12cm / 10 PRS/CTN



SHOE-BOX LABEL reporting product's features, certification,
batch number, code, QR-code and Barcode.
Size. 105x60 mm